



NORTH CAROLINA
**Occupational Safety and
Health Education
and Research Center**



**Carolina Center for Total Worker
Health® and Well-being**

Cross-Center Collaboration
John Staley, PhD, MSEH, Deputy Director, NC OSHERC
Co-Director, Outreach Core, Carolina Center for Total Worker Health® and Well-being

Gillings School of Global Public Health, University of North Carolina at Chapel Hill

Providing High-quality Education and Research Training in Occupational Health and Safety Sciences to Protect and Promote Worker Health

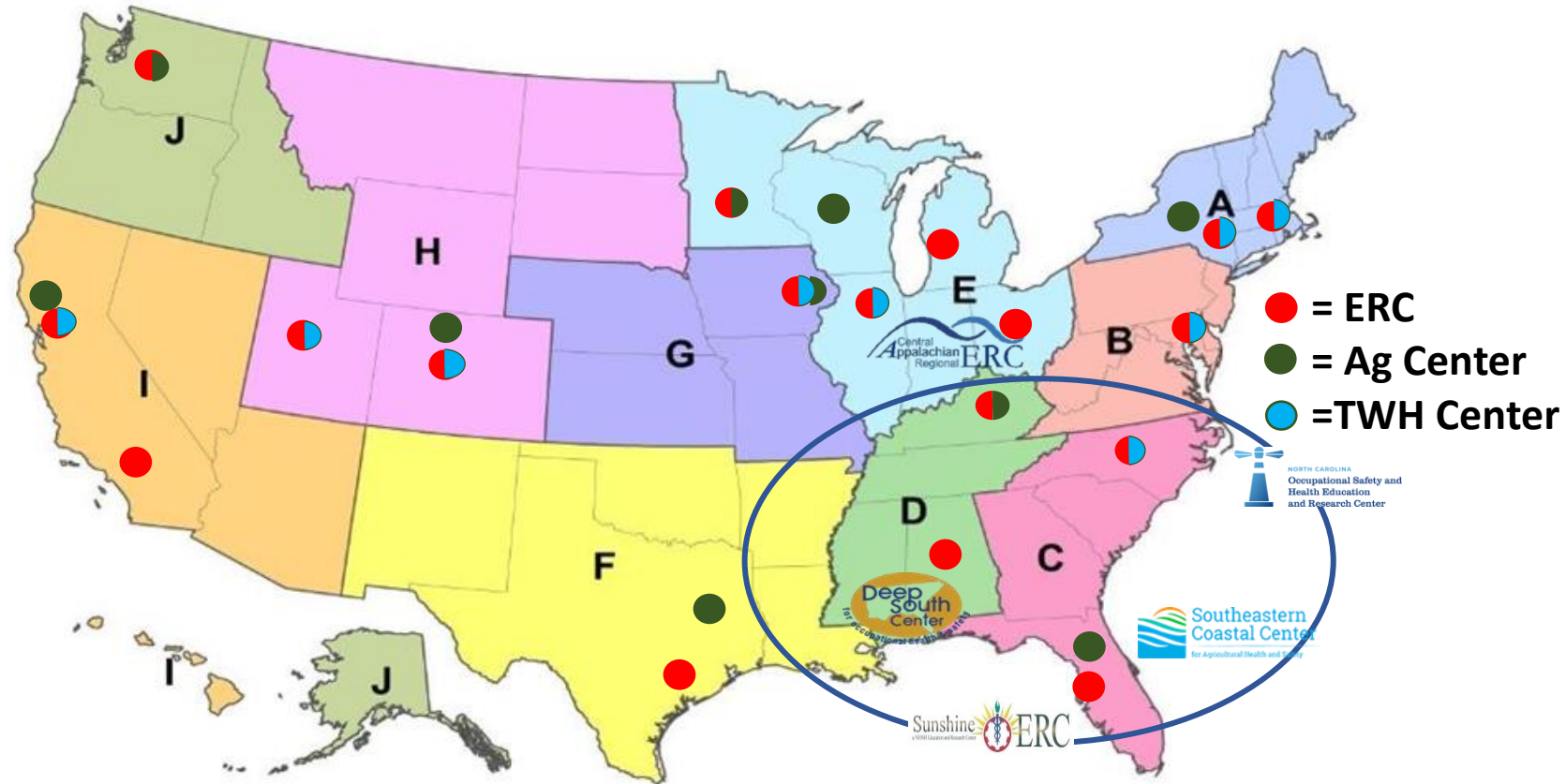
- Leena Nylander-French, PhD, CIH- Director
- Physical Location – University of North Carolina at Chapel Hill (UNC-CH), Gillings School of Global Public Health
- 3 Universities – UNC-CH, Duke University, North Carolina State University
- NIOSH Funded Education and Research Center since 1976



This Photo by Unknown Author is licensed under [CC BY-SA](https://creativecommons.org/licenses/by-sa/4.0/)



NC OSHERC and other NIOSH funded Centers in the Southeastern Region





Collaboration- More Important Than Ever

- Myriad of OHS issues locally, regionally, nationally, and globally
- Silos and Turf Battles
- Changing dynamics of the workplace and workforce
- Rapid progression of technology (and tech savvy learners)
- Need for “ST WWPers”
- Need for Public Health 3.0 and improved stakeholder engagement



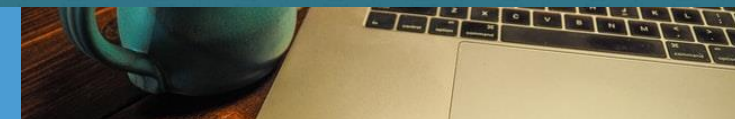
Public Health 3.0

A Call to Action to Create a 21st Century Public Health Infrastructure



Office of the Assistant Secretary for Health
U.S. Department of Health and Human Services

PUBLIC HEALTH 3.0



Regional Collaboration- Examples





Southeast
Regional
Research
Symposium



With **SouthON**
Southeastern
States
Occupational
Network



Carolina Center for Total Worker Health®
& Well-Being

Total Worker Health®: What's work got to do with it?

Monday, March 21 – Wednesday, March 23, 2022

MONDAY, DECEMBER 13, 2021

Breakouts on Workplace Safety (Continued)
Crystal Ballrooms D, E & F, Convention Level

Breakout 2 on Workplace Safety – NIOSH Regional Seminar – Building Healthier Workplaces

Presented by the National Institute for Occupational Safety and Health (NIOSH) and the Southeast Regional Education and Research Centers (ERCs) at the University of South Florida, the University of Central Florida, Embry Riddle Aeronautical University, the University of Alabama at Birmingham, Auburn University, the University of Kentucky, Eastern Kentucky University, the University of North Carolina at Chapel Hill, and the Agricultural Safety and Health Centers at the University of Kentucky and the University of Florida.

9:00 – 3:30 pm Crystal Ballrooms D, E & F
Convention Level

9:00 – 10:00 am **Health and Safety Leadership During a Crisis**

Moderator:
Thomas E. Dennis, PhD

10:15 – 11:15 am **Health and Safety Implications of the Aging Workforce: Implications of the COVID-19 Pandemic**

Moderator:
Ashley Breeze Rockwell
*Southeast Center for Agricultural Health & Injury Prevention
Central Appalachian Regional Education Research Center
University of Kentucky
Lexington, KY*

Speaker:
Steve M. Jex, PhD
*Professor
University of Central Florida
Orlando, FL*

It is well documented that the percentage of workers over 50 years of age has risen dramatically and will continue to rise over the next 20 years. This presentation will explore the implications of this trend for occupational health and safety, and more specifically how the COVID-19 pandemic has impacted older workers. As will be shown, physical and cognitive changes associated with aging make older workers more vulnerable to some workplace hazards. Older workers are also at greatest risk of serious health effects associated with exposure to the SARS-CoV-2 virus. However, it will also be shown that some of the psychological changes associated with aging make older workers safer and more reliable employees in many cases. In addition, research on employee safety suggests that older employees may be more careful in following safety protocols as compared to their younger colleagues. The key is to optimize the positive aspects of aging, while mitigating the negative effects.

11:15 – 12:15 pm **Increasing Mindfulness to Improve Workplace Safety**

Moderator:
Paulista Holt

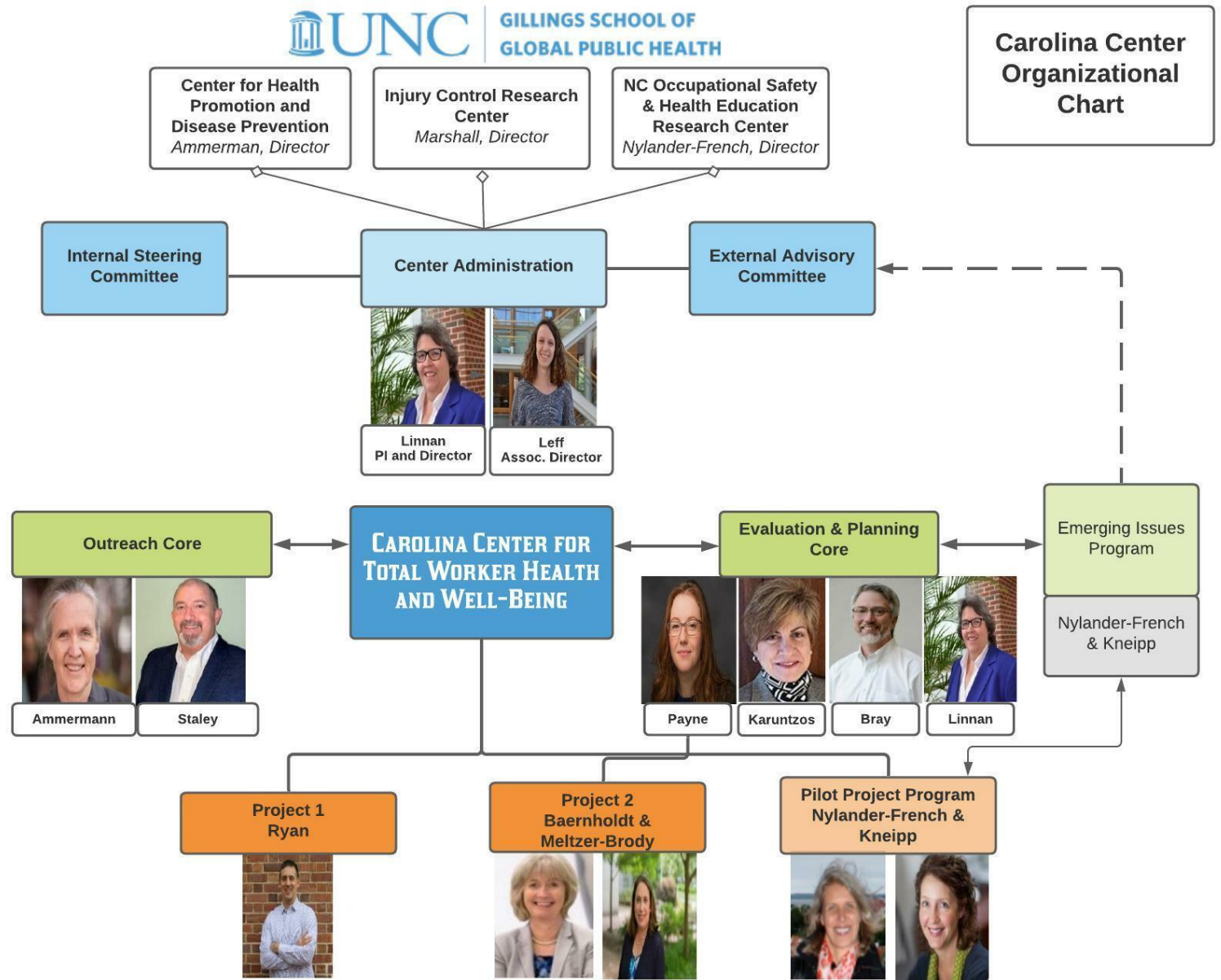


WCI 2022 Conference
76th Annual Workers' Compensation Educational Conference
33rd Safety & Health Conference
August 21-24, 2022 | Orlando World Center Marriott

Building our Momentum



Carolina Center for Total Worker Health® and Well-being



Carolina Center Organizational Chart

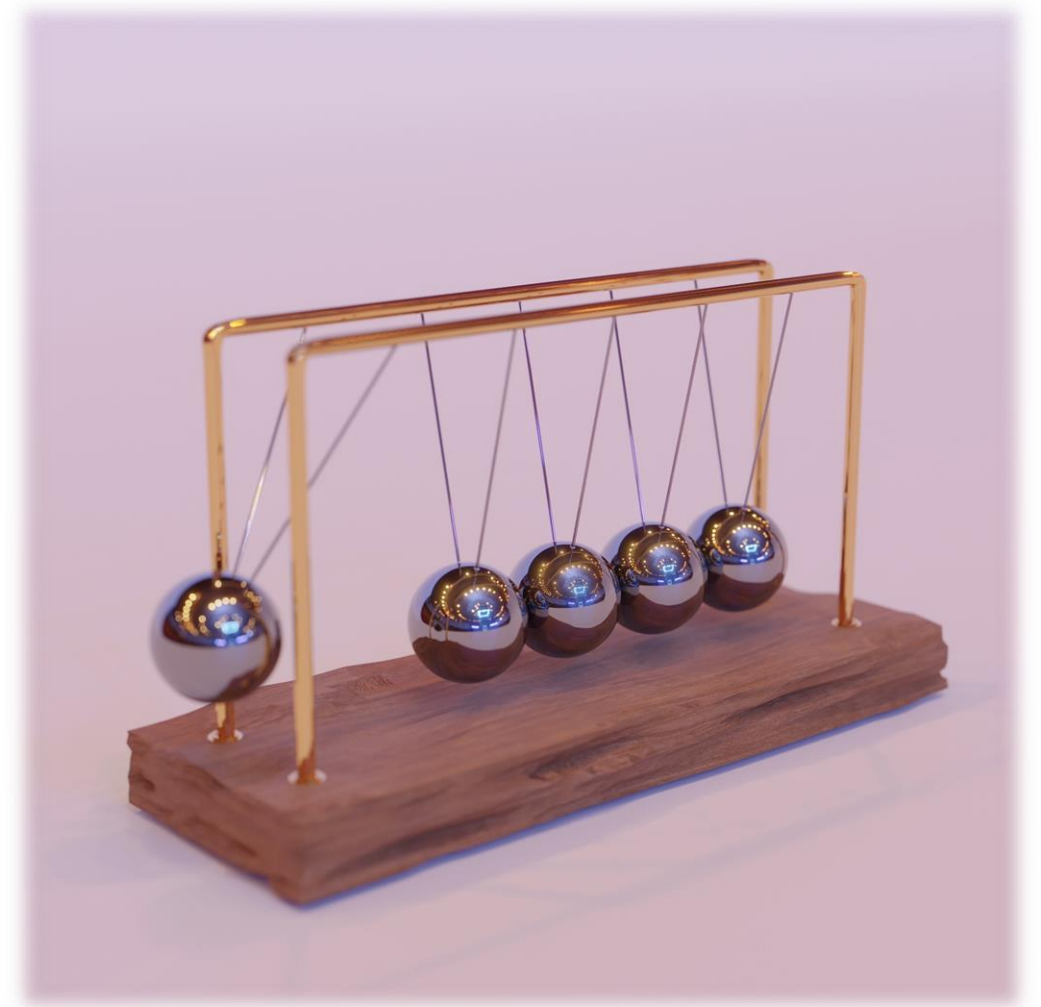
Building our Momentum



Carolina Center for Total Worker Health® and Well-being



December 14, 2022
Regional Symposium
Chapel Hill, North Carolina





NORTH CAROLINA
Occupational Safety and
Health Education
and Research Center



GILLINGS SCHOOL OF
GLOBAL PUBLIC HEALTH

NC Policy
Collaboratory

Implementing a Total Worker Health® approach to improve
worker safety and health during the COVID-19 pandemic:

The Carolina PROSPER Study

Principal Investigators: Laura Linnan, ScD and Leena Nylander-French, PhD, CIH

Acknowledgments

This work was made possible by the workers who volunteered their time and energy for our study, their employers, and North Carolina General Assembly funds as awarded by the North Carolina Policy Collaboratory (as mandated by the NCGA in subdivision (23) of Section 3.3 of Session Law 2020-4; effective May 4, 2020), for the project “Technical Assistance Using a Total Worker Health® (TWH) Approach and Evidence-based Strategies to Ensure a Safe Return to Work in North Carolina”.

We would also like to acknowledge and thank the numerous individuals and organizations who provided their time and expertise to help us deliver resources and services to NC businesses during the study:

- Geosyntec Consultants
- Richard Cravener Jr., MS, CIH, CSP
- The Ergonomics Center, NC State University
- Edwin B. Fisher, PhD and the entire Peers for Progress team
- Bahby Banks, PhD
- Diane Gavarkavich, EdD
- Members of the Carolina PROSPER external advisory board



NORTH CAROLINA
Occupational Safety and
Health Education
and Research Center

UNC | GILLINGS SCHOOL OF
GLOBAL PUBLIC HEALTH



CAROLINA
PROSPER
Promoting Safe Practices for Everyone's Future

UNC | GILLINGS SCHOOL OF
GLOBAL PUBLIC HEALTH



NORTH CAROLINA
Occupational Safety and
Health Education
and Research Center

Duke
UNIVERSITY

NC STATE UNIVERSITY

Technical Assistance

4 Business Partnerships





Pilot Research Projects



Pilot Research Projects

2021-2022 Awardees:

Hayden Giuliani, PhD student & Eric Ryan, PhD, Associate Professor
Department of Exercise and Sports Sciences, UNC-CH
The Feasibility of Workload Monitoring within Law Enforcement Officers and its Relationship to Injury Risk and Job Performance

Boyi Hu, PhD, Assistant Professor
Industrial and Systems Engineering, University of Florida
The Safety Challenges of Mobile Co-bots in Robot-Assisted Retail Environments

AnnMarie Walton, PhD, MPH, RN, OCN, CHES, FAAN, Assistant Professor &
Ivan Sapsojevic, PhD, Associate Professor
School of Nursing and School of Medicine, Duke University
Surface Contamination and PPE Use in Inpatient Oncology: the Impact of COVID-19

M.J. Ruzmyn Vilcassim, PhD, Assistant Professor
The Use of Low-cost Sensors for Worker Exposure Assessment: Testing the Impact of Various Particulate Matter Compositions on Sensor Performance
Department of Environmental Health Sciences, School of Public Health, University of Alabama – Birmingham

From 2017 – 2022:

22 Funded Projects

**Wide array of OHS Sectors and Topics
(but not limited to):**

Manufacturing

Healthcare

First Responders

Aircraft Industry

Vulnerable Workers

Workplace Ergonomics

Occupational Exposures

Targeted Research Training



- Advanced, interdisciplinary post-doctoral training in occupational health and safety (OHS) research for 1-2 years
- Focus on recruiting individuals from diverse and underrepresented backgrounds
- Training aligns with the high-priority OHS issues of the first-responder community in conjunction with NIOSH strategic goals for this high-risk occupation

Best Practices

- Top-down (begin upstream)
- Starting small is ok, but, if possible, start early
- Transparency
- Open to different viewpoints
- Accept unintended consequences for what they are
- Rigid Flexibility- adaptation is not failure!
- Make it part of your CC (Collaboration Culture)
- Others?



Source: Dilbert by Scott Adams (www.dilbert.com)

Discussion

For more on the Who, What, When, Where and How



NORTH CAROLINA

Occupational Safety and Health Education and Research Center

Supported by the National Institute for Occupational Safety and Health
(T42-OH008673)

**Please Connect
with us!**



<https://www.linkedin.com/company/nc-osherc>



<https://www.facebook.com/NCOSHERC/>



<https://twitter.com/ncosherc>

