

# DAIRY SAFETY NETWORK

[deohs.washington.edu/pnash](http://deohs.washington.edu/pnash)

Dairy Partnership in the PNW;  
Injury Prevention Research & Efforts

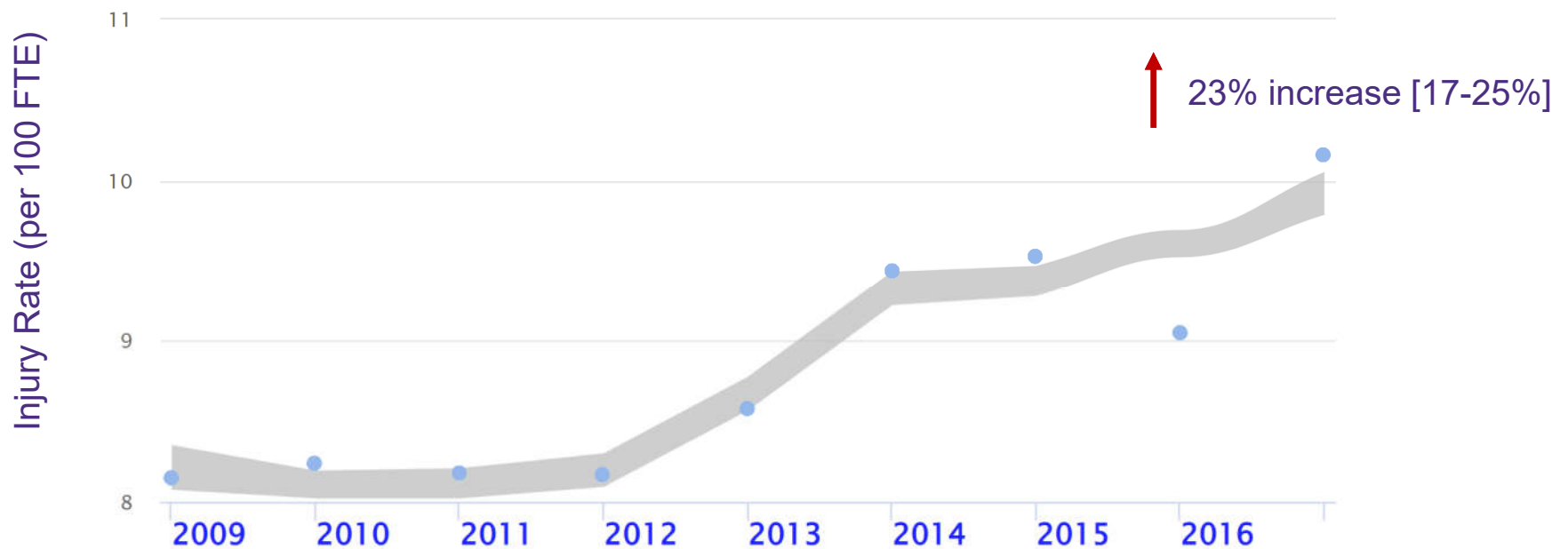


PACIFIC NORTHWEST AGRICULTURAL  
SAFETY AND HEALTH CENTER  
*farming • fishing • forestry*

WASHINGTON STATE  
UNIVERSITY

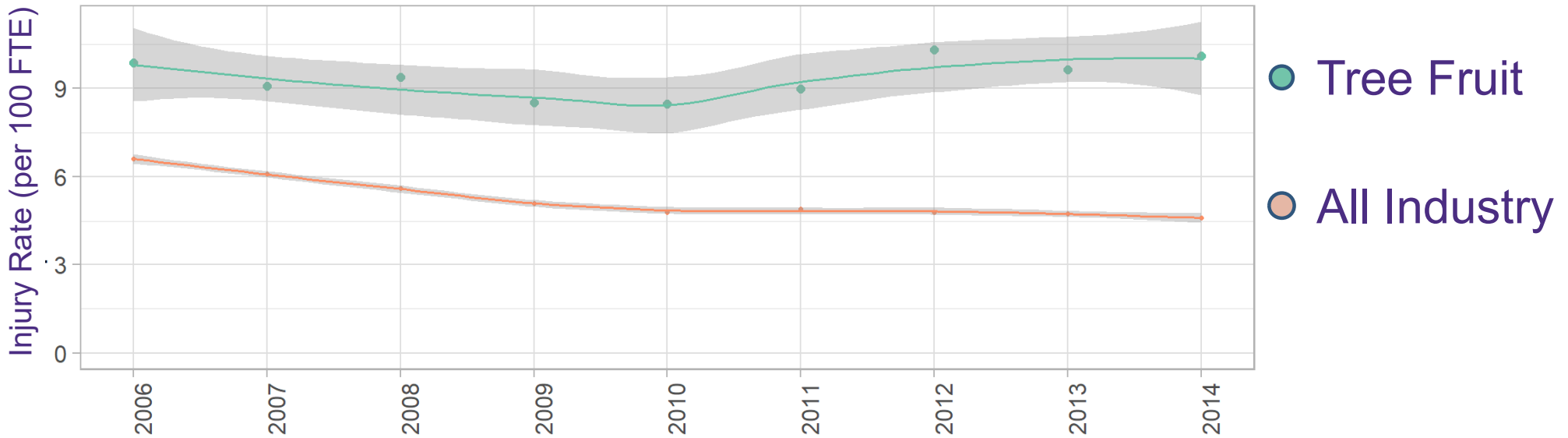
# Injury Data and Accident Prevention (Dairy)

---



# Injury Data and Accident Prevention (Tree Fruit)

---



# Injuries in Dairy from 2009-2017

Top 3 sources of injury representing 50% of total claims

---

<b>Source of Injury</b>	<b>Number of Claims</b>	<b>Percent of Total Claims (%)</b>	<b>Days Paid</b>	<b>Total Cost</b>	<b>Claims Rate (per 100 FTE)</b>
CATTLE	1265	34%	41879	11,132K \$	3.81
BODILY MOTION OR POSITION OF INJURED, ILL WORKER	286	8%	17362	4,473K \$	0.86
FLOORS, WALKWAYS, GROUND SURFACES, UNSPECIFIED	256	7%	26617	6,184K \$	0.77

# Training Intervention

## ON-FARM TRAINING

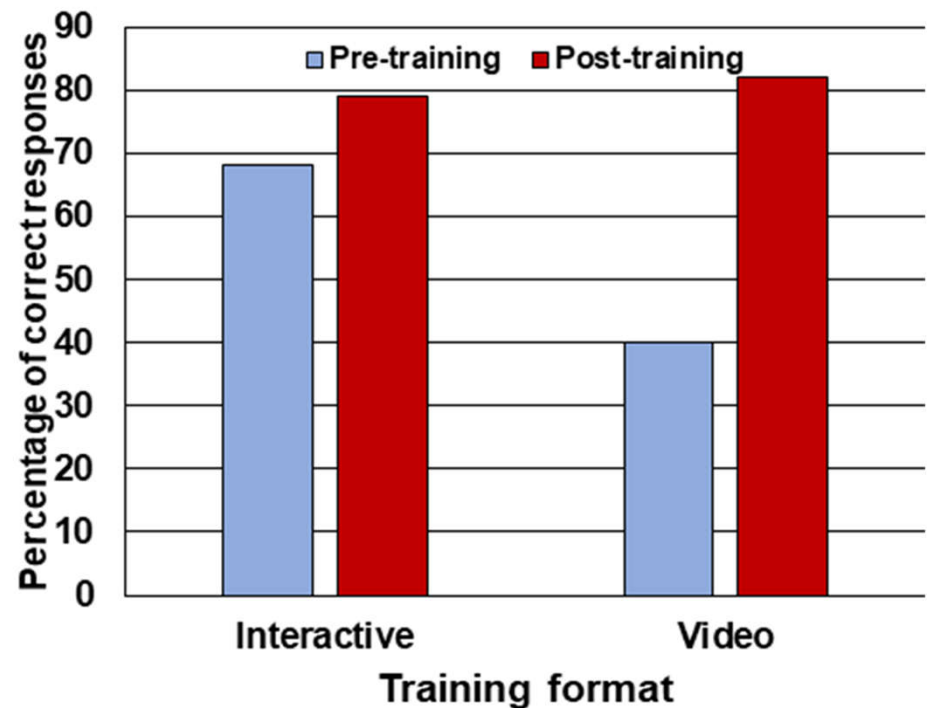
We recruited workers at 3 WA dairies to participate in either a PNASH designed interactive dairy training or a previously designed video-based training.

Both trainings were offered in Spanish and in-person.

We trained a total of 162 workers

On-farm activities were limited after COVID-19

No statistical difference in improvement by training type, although both groups showed significant improvement.



# Animal Related Injuries in Dairy from 2009-2017

Top 3 body parts injured

<b>Body Part Injured</b>	<b>Number of Claims</b>	<b>Percent of Cattle Related Claims (%)</b>	<b>Days Paid</b>	<b>Total Cost</b>	<b>Claims Rate (per 100 FTE)</b>
HAND(S), FINGERS & FINGERNAILS	248	20%	5375	1,160K \$	0.74
CHEST, EXCEPT INTERNAL LOCATION OF DISEASES OR DISORDERS	124	10%	817	373K \$	0.37
MULTIPLE BODY PARTS	123	10%	6518	2,013K \$	0.37

# LEADS Training



## **Leaders Enabling Advanced Dairy Safety (LEADS)**

- **Specialized training for W A dairy managers and owners**
- **FREE safety and leadership training (English and Spanish)**
- **Identifies top 4 most common cattle-related injuries**
- **Offers training on how to prevent those injuries**
- **Certificate of completion offered**

**SHIP** Safety and Health  
Innovation Program  
Midwestern Dairy Producers



# Dairy Safety Toolkit

<https://deohs.washington.edu/pnash/dairysafetytoolkit>

## Module Topics

1. Accident Prevention Program (APP)
2. Safety Meetings
3. Slips, Trips, and Falls
4. Animal Handling
5. FARM Program
6. Hazard Walkthrough
7. Preventing Sexual Harassment in Agriculture
8. Heat Tool Kit
9. Covid-19
10. Chemical Hazards
11. Confined Spaces
12. Near Misses on the Farm



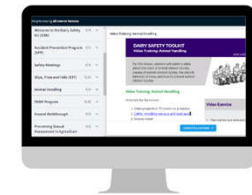
## DAIRY SAFETY TOOLKIT

Online Interactive Training for Dairy Leaders

The Dairy Safety Toolkit (DSK) is an online learning platform for producers, workers, and supervisors. It includes 12 safety modules on safety topics including, animal handling, slips, trips, and falls, chemical hazards, and more.

### How to Use it

The DSK provides training and resources for producers and farm leadership involved workplace safety. It prepares participants to deliver safety trainings and shares key resources. You can download and print materials to share at your next safety meeting. Or you can simply access links to reliable websites.



**Free Online Safety Training & Resources!**

### What is Included in the Kit?

- Downloadable videos
- PowerPoint slides
- Factsheets & posters
- Discussion boards
- Tools for conducting safety meetings
- Links to top dairy safety resources
- Spanish modules (coming soon)

### Register for the Kit

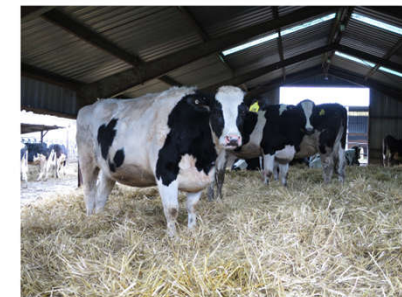
Learn at your own pace! Visit our website for a quick preview, then register to get free access to the entire DSK and associated training tools and activities:

<https://bit.ly/PNASH-Dairy-Safety>.

### PNASH Resources

Visit the PNASH website for more:

- Heat Illness Prevention
- Pesticide Safety
- Sexual Harassment Prevention







# Connect with us

[deohs.washington.edu/pnash](https://deohs.washington.edu/pnash)

[pnash@uw.edu](mailto:pnash@uw.edu) @PNASHCenter (206) 616-1958



Elena Austin, ScD

[elaustin@uw.edu](mailto:elaustin@uw.edu)